



# SeaEra QC

New straightforward design allows the simplest of installation while providing top of the line controls.

## Freshwater Solenoid Model (162MF\* or 162HF\*)

- Whisper Flush<sup>sm</sup> design for quiet operation
- Less maintenance and odors than raw water models
- Connects to vessels existing pressurized system
- Easy installation with integral vacuum breaker
- Low power consumption

## Remote Intake Pump Model (162MR\* or 162HR\*)

- Reduces noise levels
- Easier access to intake pump, more flexible installation when long runs are required

High quality electric marine toilet with proven reliability that meets the demands of real world boating and your budget

Household size bowls, fresh or raw water usage and 90 degree discharge options to meet any installation requirement. Bowl can be rotated 90° for mounting in confined spaces

## Both Models

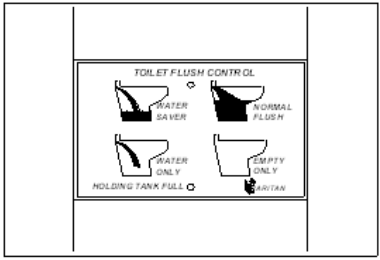
- Available with Smart Toilet Control - Maximizes flush efficiency with low water consumption and noise levels
- Uses as little as 2 pints of water per flush
- Easily adapts to our SeaFresh model allowing the user to select between raw or freshwater
- Base rotates 90 degrees for installation in tight areas
- Available for 12, 24, 32V DC or 120/240V AC

*Raritan products are chosen by powerboat, sailboat, houseboat and RV owners and manufacturers the world over for their dependability, environmental responsibility, simplicity of installation, operation and maintenance. The product line includes house-hold style toilets, marine toilets, marine sanitation devices and systems, cleaning products, icemakers, water heaters and rudder angle indicators.*

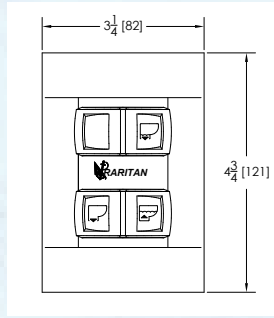
To view our complete line as well as obtain installation and servicing guides: visit [www.raritaneng.com](http://www.raritaneng.com)

# SeaEra

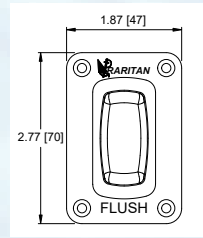
Choice of controls:



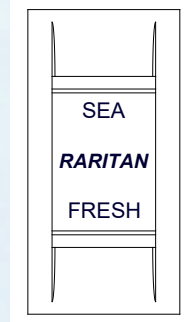
**Smart Toilet Control -**  
Ultimate control over intake and discharge water. Timed flush when using water saver or normal flush cycle



**Multifunction Flush Panel**  
Allows independent operation of intake or discharge no timed flush. Can be mounted horizontally or vertically.



**Momentary Flush Switch**  
Most economical



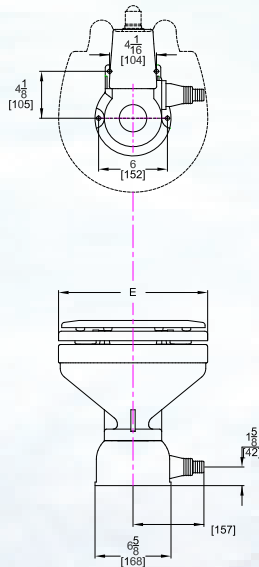
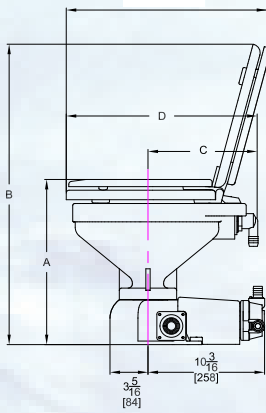
**Sea/Fresh selector -** When both solenoid and remote pump are installed, user can easily select between raw or fresh water

## PART # CONFIGURATION:

Model	Bowl	Intake water	Discharge Fitting	Voltage	Control
<b>162</b>	<b>L-</b> Lower base <b>C-</b> Conversion <b>M-</b> Marine <b>B-</b> Bowl <b>H-</b> Household <b>B-</b> Bowl	<b>F-</b> pressurized fresh water <b>R-</b> remote raw water pump <b>S-</b> Sea Fresh	<b>0-</b> Straight and 90° both included	<b>12-</b> 12VDC <b>24-</b> 24VDC <b>32-</b> 32VDC <b>12T-</b> 120/240 AC	<b>None-</b> Smart Toilet Control (STC) <b>01-</b> Multifunction Flush Panel <b>02-</b> Momentary Flush Switch

**Example:** Part # 162MF012--Marine size white bowl, pressurized fresh water, 12V, STC Control

### Pressurized Freshwater or Remote Sea Water Model



BOWL TYPE	A	B	C	D	E
MARINE	14 1/2 (368)	26 1/2 (673)	10 3/8 (264)	17 1/4 (438)	13 (330)
HOUSEHOLD	14 7/8 (378)	29 5/8 (752)	11 1/2 (292)	20 (508)	14 3/8 (365)

INCHES (MM)

### Specifications:

Electrical	With remote pump: 23A@12V 12.5A@24V 9A@32V Pressurized water: 13A@12V 7.5A@24V
Inlet Fitting	1/2"(13)Hose barb--Pressurized water 3/4"(19) Hose barb- pump model
Discharge Fitting	1"(25) or 1.5"(38) hose -straight 1.5"(38) hose -90 degree
Max Lift	4' (1219)
Discharge ht.	9'(2743) vertical / 50' horizontal
Shipping wt.	38-40lb (17-18KG)



[www.raritaneng.com](http://www.raritaneng.com)

For more information contact:  
**Raritan Engineering Company Inc.**  
 530 Orange Street  
 Millville, NJ 08332, USA  
 Telephone: 856-825-4900  
 Toll Free: 1-800-352-5630  
 Fax: 856-825-4409  
 e-mail: [info@raritaneng.com](mailto:info@raritaneng.com)