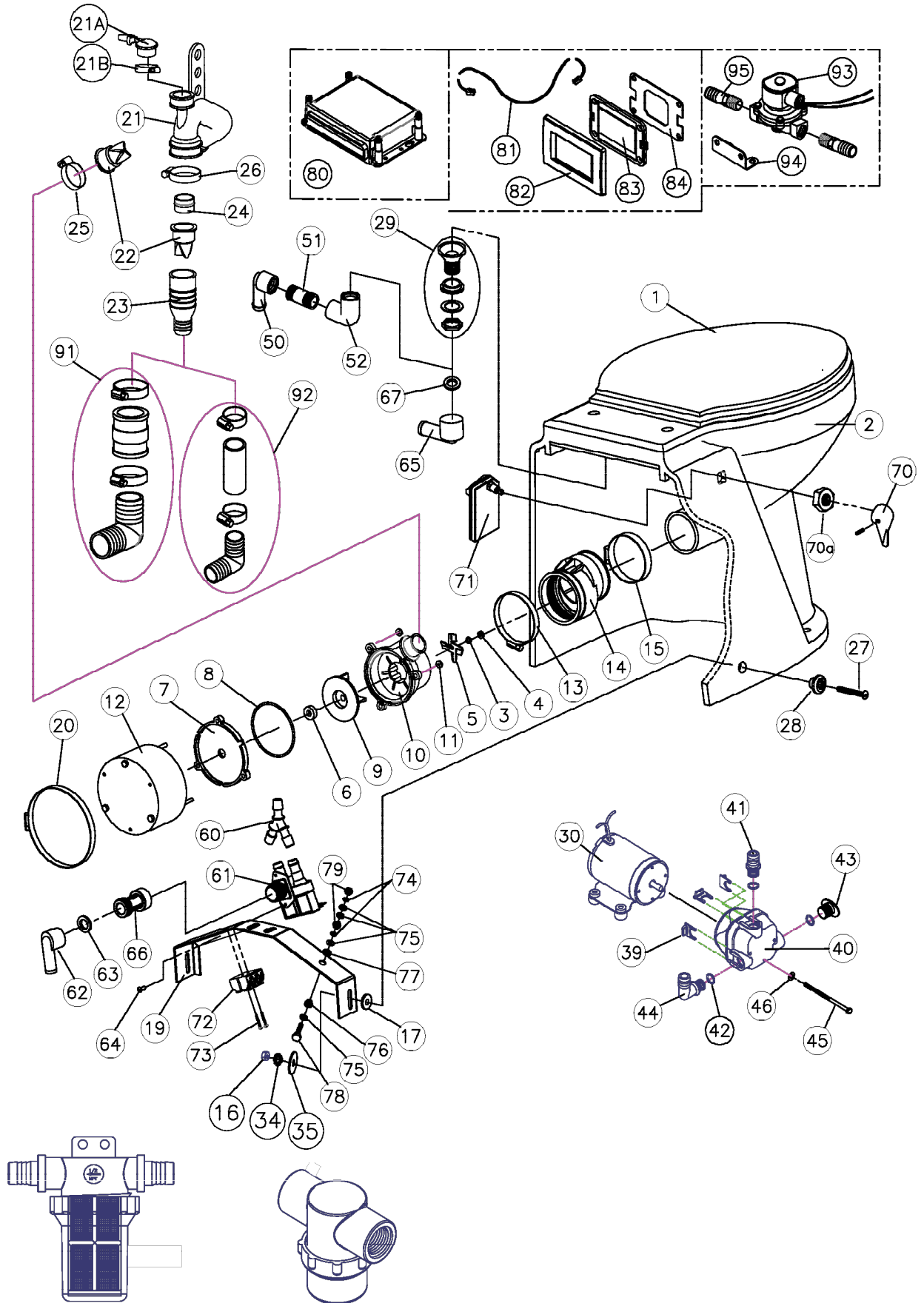


Atlantes Freedom With Vortex Vac Parts List - Elongated

| Item # | Part # | Description | BOWL MOUNTED FLUSH HANDLE | | |
|--------------------------------------|----------|---|---|---|---|
| 1 | 241101SC | Seat & Cover Slow Close (White) | 70 | AM665W | Handle SS W/Set Screw |
| 1 | AL030ASC | Seat & Cover Slow Close (Bone) | 70a | F104 | Brass Panel Hex Nut |
| 2 | AL002W | Atlantes Bowl Elongated (White) | 71 | AV600W | Flush Control & Wire Harness |
| 2 | AL002AW | Atlantes Bowl Elongated (Bone) | 72 | ETB3 | Terminal Block 3 Poles |
| 3 | M23A | #10 Lock Washer SS | 73 | F108 | Screw #4 x 7/8" (2) |
| 4 | 1108A | 10-32 SS Nut | 74 | HLWQB | 1/4" Split Lock Washer (4) |
| 5 | 53145 | Macerator Blade | 75 | M31 | 1/4" Brass Flat Washer (8) |
| 6 | 31-102 | Motor Shaft Seal | 76 | 31-722 | Nylon Shoulder Washer (2) |
| 7 | 221110 | Discharge Pump Seal Plate | 77 | F069 | 1/4" Fiber Washer (2) |
| 8 | 221105 | O-Ring | 78 | HSB1 | 1/4-20 Brass Screw (2) |
| 9 | 161115 | Impeller | 79 | M30 | 1/4-20 Brass Nut |
| 10 | 221115 | Discharge Pump Macerator Housing | SMART TOILET CONTROL | | |
| 11 | 31-114 | Lock Nut 10-32 W/Nylon (3) | STC Complete Smart Toilet Control Kit (12 & 24 VDC) | | |
| 12 | 221012 | Discharge Motor 12 VDC | STCBL Complete Bluetooth STC Kit (12 & 24 VDC) | | |
| 12 | 221024 | Discharge Motor 24 VDC | 80 | STC548W | STC Circuit Board w/Enclosure (12 & 24 VDC) |
| 13 | 221125 | Bowl Throat Adapter Clamp-Pump | 80 | STC566W | Bluetooth STC Circuit Board w/Enclosure (12 & 24 VDC) |
| 14 | AM221120 | Bowl Throat Adapter | | | |
| 15 | 221126 | Bowl Throat Adapter Clamp-Bowl | 81 | STC545 | Control Cable 7 ft |
| 16 | 1226B | 1/4-20 Hex Nut SS | 82 | 221524 | Wall Switch Cover Plate (White) |
| 17 | CH57 | Rubber Slinger | 82 | 221524A | Wall Switch Cover Plate (Bone) |
| 19 | AM021 | Pump Mounting Bracket | 83 | STC543W | Touch Wall Panel w/Back Plate |
| 20 | 221127 | Discharge Motor Mounting Clamp | 83 | STC564 | Bluetooth Touch Wall Panel w/Back and Gasket |
| 21 | 221141W | Discharge Hose (includes 22-28) | 84 | 221525 | Touch Panel Gasket |
| 22 | 221135W | Joker Valve (2) (includes 24) | MULTIFUNCTION FLUSH PANEL (NOT SHOWN) | | |
| 23 | 221145 | Discharge Adapter Fitting | 221600 | Multifunction Flush Panel, White | |
| 24 | 221146 | Joker Valve Insert | 221600B | Multifunction Flush Panel, Black | |
| 25 | 221160 | Discharge Hose Clamp (small) | 221524 | Wall Switch Plate, White | |
| 26 | 221165 | Discharge Hose Clamp (large) | 221524B | Wall Switch Plate Black | |
| 27 | VLVE | Vent Valve Assembly | <u>Black / White</u> | | |
| 28 | FC001A | Vent Valve Clamp | 221601 / 221601W | Fill/Empty Switch | |
| 29 | 1236AW | Spud Assembly w/ BLACK Seal | 221602 / 221602W | Flush Switch | |
| 29 | 1236AWR | Spud Assembly w/ RED Seal | 221603 / 221603W | Switch Actuator-Flush, Horizontal Panel | |
| 30 | F089 | Screw: 1/4-20 x 2" (2) | 221604 / 221604W | Switch Actuator-Fill/Empty, Horizontal Panel | |
| 31 | F196 | ME: Front Mounting Cap (2) | 221605 / 221605W | Switch Actuator-Flush, Vertical Panel | |
| 32 | F195 | Washer: Cup (2) | 221606 / 221606W | Switch Actuator-Fill/Empty, Vertical Panel | |
| 33 | F071 | Nylon Shoulder Washer (2) | | | |
| 34 | 1118 | Washer 1/4" External Tooth | | | |
| 35 | F321 | Washer Fender Style | | | |
| REMOTE RAW WATER PUMP | | | REPAIR/ REPLACE KITS | | |
| 40 | 166012A | Intake Pump Motor 12 VDC | MERK | Discharge Pump Repair Kit (includes 6, 8 and 22) | |
| 40 | 166024A | Intake Pump Motor 24 VDC | DIAPUMPRK | Intake Pump Repair Kit | |
| 41 | 162000W | Remote Intake Pump w/o Motor (includes 45 and 46) | 2210012 | 12 VDC Discharge Assembly (includes 3-12 and 21-28) | |
| 42 | 162405 | 3/4" Hose Barb 90° Fitting | 2210024 | 24 VDC Discharge Assembly (includes 3-12 and 21-28) | |
| 43 | 162410 | 3/4" Hose Barb Straight | 162400 | Fitting Kit (includes 42-44 and 46) | |
| 44 | 162415 | Plug Fitting | PARTS NOT SHOWN | | |
| 45 | 162420 | Fitting Retaining Clip (3) | 221335 | Hose, 1/2" | |
| 46 | 162425 | O-Ring (3) | 221340 | Hose Clamps, 1/2" | |
| 47 | F162VT | Inlet Pump Mounting Bolt (4) | ADDITIONAL (OPTIONAL) ACCESSORIES AVAILABLE FROM RARITAN | | |
| 48 | F144 | #10 Washer SS Flat (4) | 91 | 221147 | 1 1/2" [38 mm] Thru Wall Discharge Kit |
| 49 | 166000 | Complete Remote Pump 12 VDC | 92 | 221148 | 1" [25 mm] Thru Wall Discharge Kit |
| 49 | 166100 | Complete Remote Pump 24 VDC | 1PCP32 | C.P. Cleans Potties, 32 oz | |
| 50 | 1236E | Elbow Adapter 3/4 FPT x 3/4 Barb | 1PCHGAL | Cleans Hoses, Tanks and MSD (gallon) | |
| 51 | AM012 | Elbow, 3/4, 90° | 1PKO32 | Kills Odors, 32 oz | |
| 52 | AM011 | Nipple, 3/4 x 2" PVC | KO2 | Deodorant System (Raw water models) | |
| PRESSURIZED FRESH WATER UNITS | | | SFH | Sanitation Hose 1 1/2" [38 mm] (sold by foot) | |
| 60 | 221362 | Y Fitting | SFH1 | Sanitation Hose 1" [25 mm] (sold by foot) | |
| 61 | 221353 | Solenoid Valve 12 VDC D90 | 163000 | In-Line Strainer | |
| 61 | 221354 | Solenoid Valve 24 VDC D90 | 190601 | Fresh Water Strainer | |
| 62 | 221358W | Inlet Adapter Assembly 90 Degrees | RTME12D | Power Converter for 120/240 VAC | |
| 63 | 221361 | Sealing Washer | STCTSA | Holding Tank Full Sensor (Stick on) For use with STC Flush Control | |
| 64 | F201 | Screw: M4 x 10mm SS Phillips | STCFL | Holding Tank Full Sensor (Float Switch) For use with STC Flush Control | |
| 65 | PLA29 | Elbow: 3/4 FPT x 1/2 Barbed | | | |
| 66 | SF50W | Sea/Fresh: Check Valve HG | | | |

Atlantes Freedom with Vortex Vac Exploded Parts View - Elongated



Optional
In-Line Strainer
Part 163000

Optional Pressurized
Fresh Water Strainer
Part 190601