

PARTS FOR RARITAN PH SUPERFLUSH AND PH POWERFLUSH

<u>Part No.</u>	<u>Description</u>
3 25101A	Base
25101AW	Base Assembly (includes parts #4, 5, 6 and 7)
4 25102	Base Plug
5 25103	Base O-Ring
6 25104	Base mounting plug
8a F081	Bowl Bolt 1/4"-20 x 2 S/S Hex head (for units manufactured before 10/2016)
8b CH38	1/4-20 x 2 threaded stud (for units manufactured after 11/2016)
12 1208W	Retractable handle
13 1236E	Bowl Elbow
14 CH43	S/S Hose Clamp (2)
15 CH42	Hose (3/4" I.D.)
17 221361	Sealing Washer
19 F408	Screw: 1/4-20 x 5/8
20 1200CW	Pump Housing, includes 1214W
21 1214W	Piston Shaft Seal Cartridge Assy (1214, 1214A, 1214B)
22 1214	Seal Cartridge
23 1214A	Cartridge Shaft seal
24 1214B	Cartridge O-ring
25 1203BW	Intake Valve Body w/"O" Rings, (Includes 1203B, 1203B1, 1203B2, 1203B3)
26 1203B1	Inlet Valve Stem "O" Ring (small black)
27 1203B2	Inlet Valve Body "O" Ring (medium black)
28 1203B3	Inlet Valve Bottom "O" Ring (large black)
29 1204B	Intake Valve Cap
30 1202	Intake and Discharge Valve Gasket (2)
31 1209BW	Valve Handle
32 1124	1/4"- 20 x 1/2" R.H. Machine Screw
33 1217	Discharge Valve Cap
34 LWS	Intake and Discharge Valve Spring (2)
35 1201	Intake and Discharge Valve Ball (2)
36 1212W	Piston Rod Assembly w/ "O" Ring (1232MS)
37 1232MS	Piston "O" Ring
38 1203W	Air Valve Assembly
39 1228CW	Flapper valve with embedded weight
40 C253	Joker Valve
41 1222AW	90° Discharge w/Flange (Std.)
42 1222B	Straight Discharge (Opt.)
43 1115	3/8"-16 x 1 1/2" Hex Head S/S Bolt(2)
44 1223B	Flange Nut 3/8"-16 S/S (2)
45 1210	Handle Socket, includes 1210A
46 1211PL	Piston Rod Yoke, includes F005 and VT
47 F005	1/4" - 20 x 5/16" S/S set screw
48 1218	Fulcrum Link (2)
49 1216	Clevis Pin (3)
50 1210B	Cotter Pin, Rue Ring
51 1210A	Cotter Pin

BOWL & SEAT

<u>Part No.</u>	<u>Description</u>
1 1237W	Marine-size Bowl assy. (includes #16)
1 1244W	White Household-size Bowl assy. (includes #16)
2 1238SC	Marine-size seat & cover; Slow Close
2 1245SC	Household-style seat & cover; Slow Close
7 25105	Bowl Gasket
9 RNI	Nylon Shoulder Washer
10 1226B	Nut, 1/4"-20 S/S (8)
11 VCAP	Vinyl Cap
16 1236AW	Spud assy.

ADDITIONAL PARTS FOR RARITAN PH SUPERFLUSH AND PH POWERFLUSH

RARITAN INSTALLATION ACCESSORIES

<u>Part No.</u>	<u>Description</u>
163000	In-Line Strainer
1PCP32	C.P., Cleans Potties, Bio-enzymatic, 32oz.
SFH	Saniflex Hose 1 1/2"
SL1CC	Super Lube 1cc tube
KO2	Knocks Out Odor Kit
VT	Vibra-Tite packets

OVERHAUL KITS

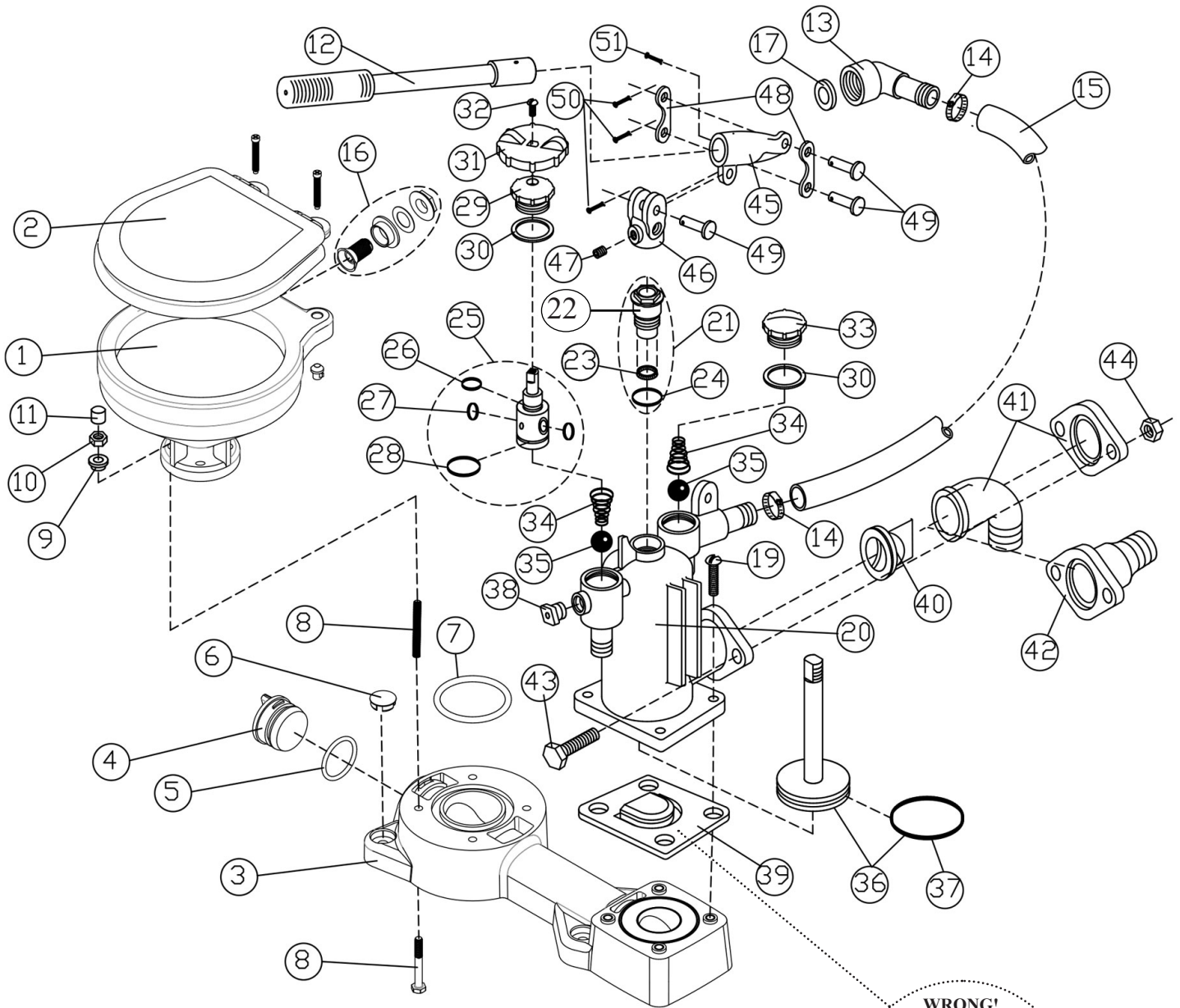
<u>Part No.</u>	<u>Description</u>
PHRKIIU	Universal PH repair kit
PHIIPUMP	PHII Pump replacement assembly

CONVERSION KIT

P105E**	PH SUPERFLUSH to PH POWERFLUSH Conversion Kit
---------	--------------------------------------------------

**Voltage:
12 (12VDC)
24 (24VDC)
12T (115V/230V AC)

PH SUPERFLUSH EXPLODED VIEW



ORDERING INFO:

Sample Part: P101E12 = Marine size bowl, Electric drive, 12V DC

Model	Bowl (white) Size	Operation	Voltage
P10	1 -Marine Size 2 -Household Size 3 -Lower Assy (no bowl) 5 -Electric Conversion Kit	None -Manual E -Electric	None -Manual 12 -12V DC 24 -24V DC 12T -115V/230V DC

