

CROWN HEAD PARTS LIST

(Quantities are one unless otherwise indicated)

Before ordering, locate required part on exploded parts view to be sure you are ordering the correct part for your CROWN HEAD.

<u>Part No.</u>	<u>Description</u>	<u>Part No.</u>	<u>Description</u>
1118	Lockwasher (4)	F149VT	Set Screw (2)
1203B1	“O” Ring	G15	Impeller Washer (2)
1222AW	Discharge Ell and Flange	G13W	Pump Impeller Assembly w/(2) G15
1222B	Straight Discharge	G2M	Impeller Wear Plate
1222BW	Straight Discharge Assembly (Incl. 1222B, CH90, CH92, [2]1115, C253, [4]CH27)	M23A	Lockwasher (4)
1226B	Bowl Mounting Nut (4)	M30	Hex Nut, Brass (2)
1234	Bowl Gasket (fits all Raritan toilets)	M31	Flat Washer, Brass (2)
1341	Discharge Screw (2)	RNI	Nylon Bowl Mounting Washer (4)
31-102	Motor Shaft Seal	VCAP	Vinyl Cap (bowl nut cover)
C253	Joker Valve	MISCELLANEOUS RELATED PARTS	
CH102MW	Intake Pump Assembly, complete	<u>Part No.</u>	<u>Description</u>
CH119MW	Discharge Impeller Assy. (Incl. CH119M, [2] F149VT)	1236AW	Bowl Spud Assembly
CH12	Check Ball	1237W	Marine-size Bowl, Round Top Rim (white) incl. 1236AW
CH120	Discharge Pump Wall	1238SC	Slow Close, Seat and Cover for Marine-size Bowl (white)
CH121	Macerator	1244W	Household-style Bowl, Oval Top Rim (white) includes 1236AW
*CH136	Siphon Cap for Shroud Bottle	1245SC	Slow Close, Seat and Cover for Household-style Bowl
CH137	Vinyl Cap (white)	163000	In-Line Strainer
CH18W	Front Cover (w/“O” ring)	CDS**	Continuous Duty Solenoid Relay
CH2	Pump Body (w/shaft seal)	1PCP32	Cleans Potties 32 oz.
CH25	Front Cover “O” Ring	CSRK	Repair Kit (Centrifugal Discharge Series) Includes: CH25, CH92, 1234, CH12, G13, CH8, CH37E, RNI, CH120, C253, CH59, 31-102, CH7, G15, 1203B1 and CH57
CH26	Front Cover Screw (6)	CDPUMPRK	Crown Head CD Series & CHII Intake Pump Repair Kit (built before 4/95) Includes: 1203B1, CH12, G13, G2M, 31-102, CH7 and G15
CH27	Mounting Screw (4)	CDDISRK	Crown Head CD Series Discharge Repair Kit; Includes: 1234, CH120, CH57, CH92, C253, CH25 and CH59
*CH291	Shroud (2 pcs)	CR1	Discharge Impeller and Macerator Assy. (incl. CH120, CH121, F149VT [2], and CH119MW)
*CH29A	Shroud Bottle (Concentrate Reservoir)	PRS	Momentary Flush Switch
CH34	Woodruff Key	SFH	Saniflex Hose 1 1/2”
*CH37	Siphon Tubing	SL1CC	Super-Lube 1/2 oz. tube
CH37E	Siphon Check Valve		
CH38	Bowl Stud (4)		
CH42	Hose		
CH43	S/S Hose Clamp (2)		
CH43P	Nylon Clamp (2)		
CH5VW	Pump Plug, Vented(Incl. 1203B1 O Ring)		
CH51	Base Screw (4)		
CH52	Rubber Mounting Strip (2) not shown		
CH53	Pump Mounting Screw (4)		
CH55A	Base Plate		
CH57	Slinger		
CH58	End Bell Screw (4)		
CH59	Seal with Stainless Steel Spring		
CH6	Pump Cover Plate		
CH7	Pump Gasket		
CH8	Check Valve Spring		
CH90	Discharge Adapter		
CH92	Adapter Gasket		
CHM**	Motor		

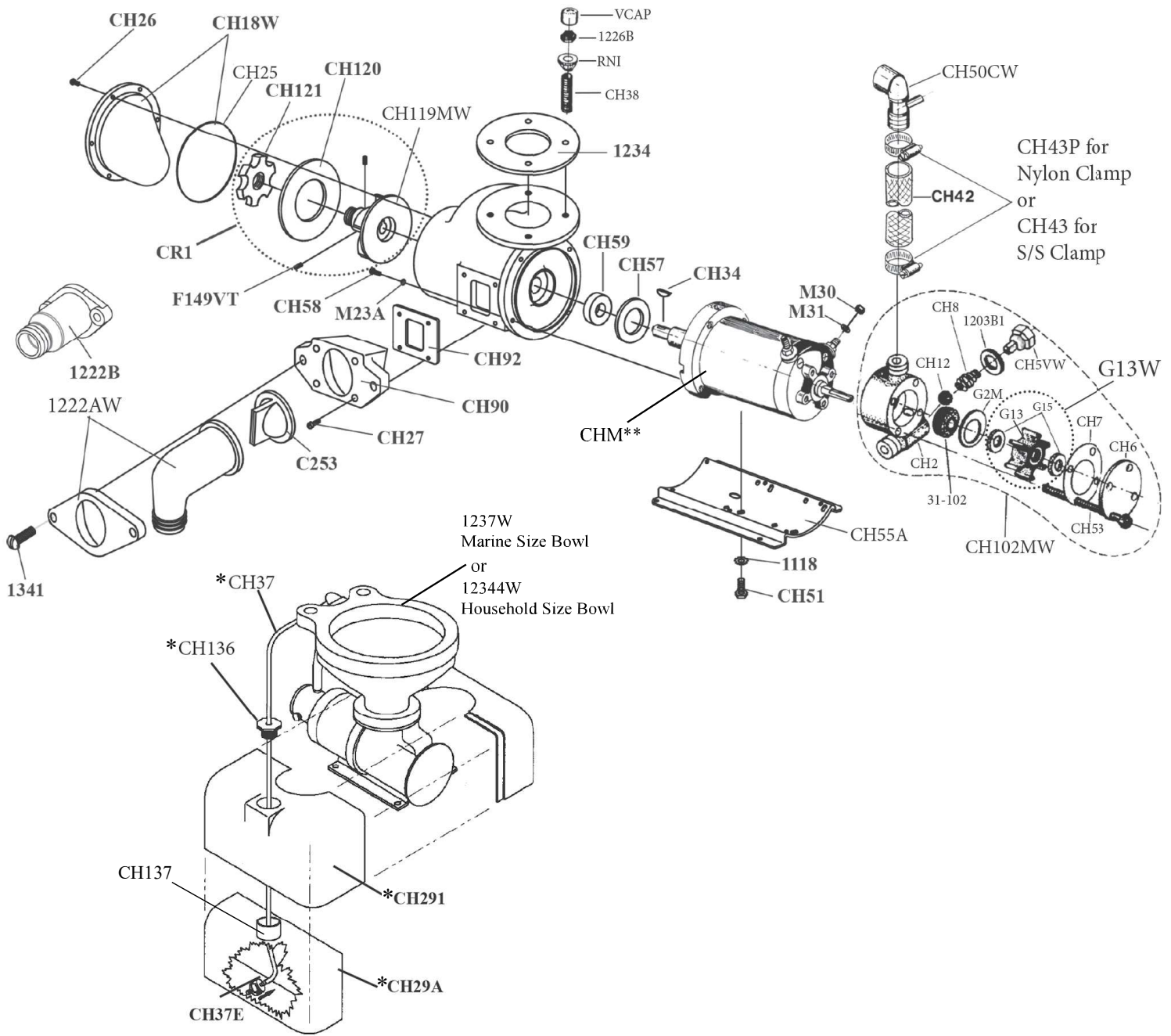
* Discontinued, contact Raritan Engineering for availability.

****Specify Voltage
12 or 24 VDC**

Crown Head

EXPLODED PARTS VIEW

CENTRIFUGAL DISCHARGE SERIES



* Discontinued, contact Raritan Engineering for availability.

****Specify Voltage
12 or 24 VDC**